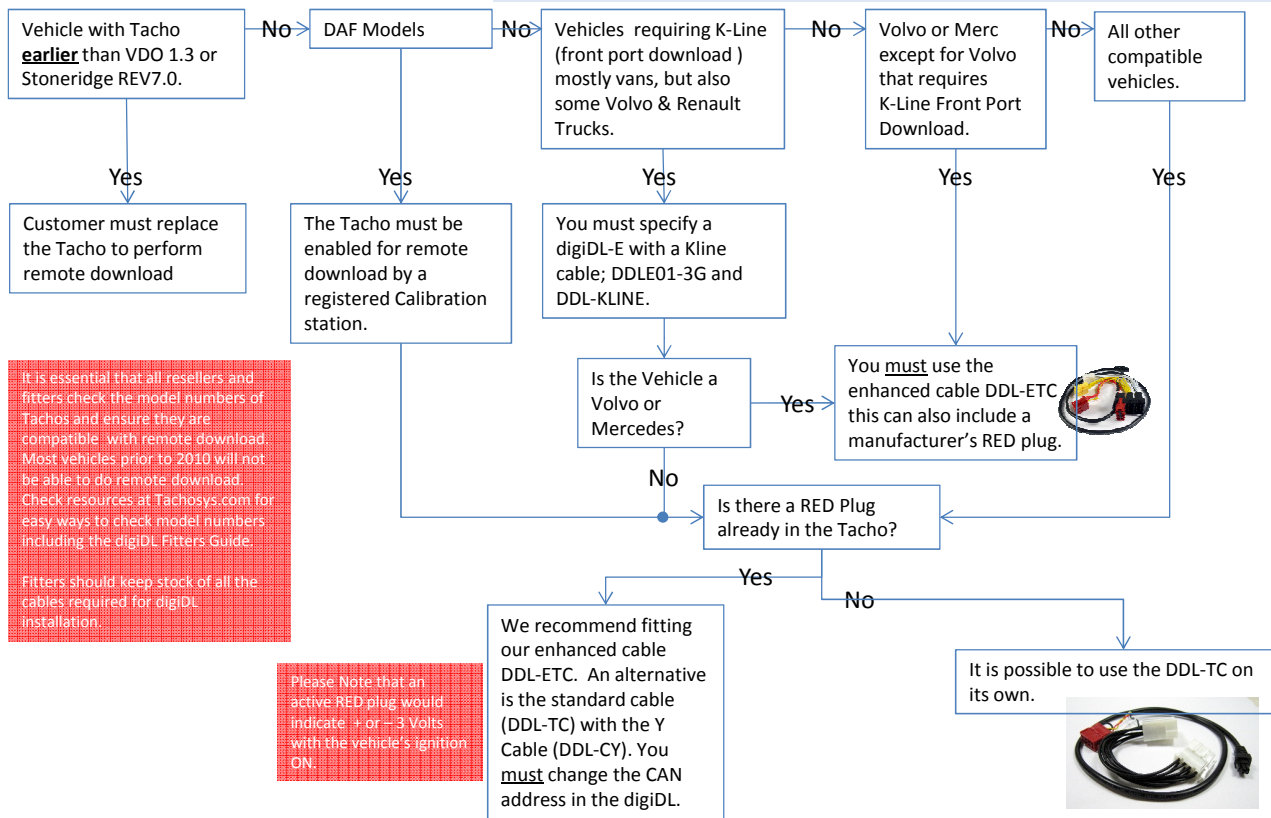


digIDL decision tree – June 2019

The information given is for guidance only. Individual truck installations can vary considerably. We merely highlight common considerations. Tachosys will not accept any liability for assumptions made using these guidelines. Customers need to avail themselves of any additional truck manufacturer or in vehicle system requirements or possible conflicts.



It is essential that all resellers and fitters check the model numbers of Tachos and ensure they are compatible with remote download. Most vehicles prior to 2010 will not be able to do remote download. Check resources at Tachosys.com for easy ways to check model numbers including the digiDL Fitters Guide. Fitters should keep stock of all the cables required for digiDL installation.

Please Note that an active RED plug would indicate + or -3 Volts with the vehicle's ignition ON.

Tacho Model Lookup at lookup.tachosys.com (access restrictions apply)

Results:			
Registration / Serial number	Version	Remote Download compatible	Driver Decision Support
1381-2051100009 VDO, DAF, LF, CF, XF	1.4	2	

This example shows a DAF – The small '2' relates to a special requirement which is shown in the notes adjacent to the lookup. Always check these numbers and notes.

2. CAN-C needs to be activated via CTC II programmer.

Cables and Plugs

Code	Desc	
DDL-TC	Standard cable – all digiDL types. Stock item but consider DDL-ETC below.	
DDL-DP	Double plug - for Merc and Volvo – special order only.	
DDL-CY	Y Cable – recommend one is supplied for each 2014 vehicle onwards the digiDL CAN Address must be changed.	
DDL-ETC	3 in 1 cable incorporating the standard cable (DDL-TC), DDL-DP and DDL-CY and is recommended for all installations.	
DDL-DB	Manual download button. Good for agency drivers.	
DDL-TCX	Extension cable - to place digiDL away from other comms devices.	
DDL-Kline	Kline cable for use with digiDL-E - only for front port download	